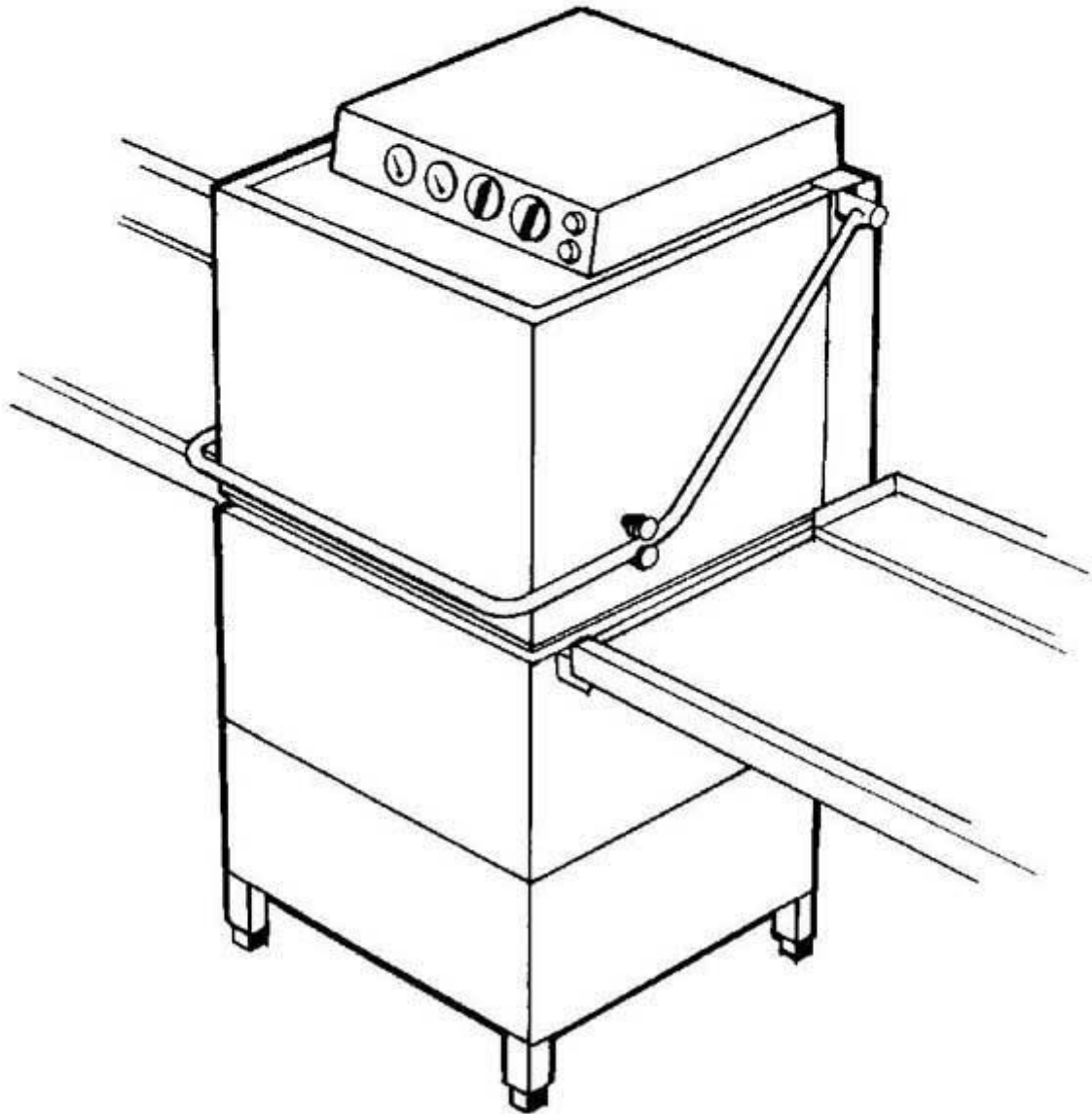


winterhalter

Spare Parts GS 90

Revised 10/04

Part no. 89000594



Summary

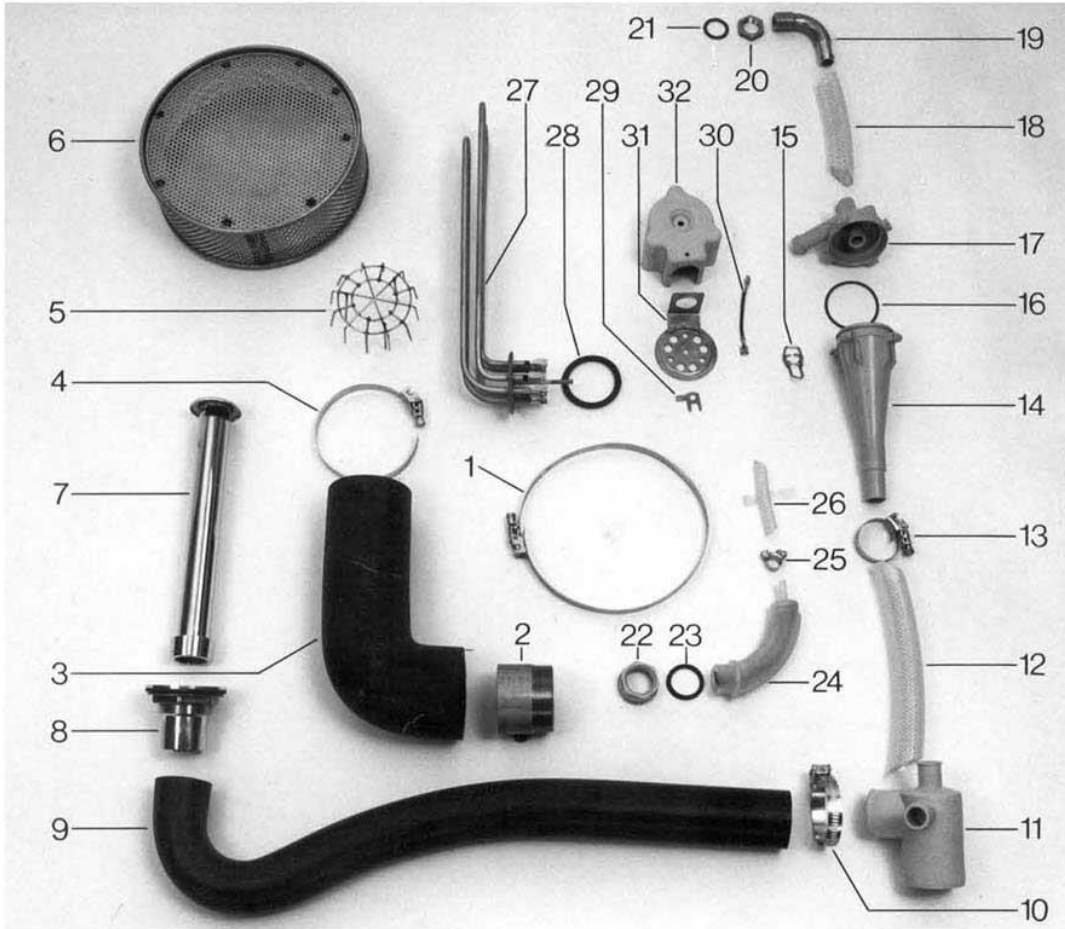
Base frame, container	Page 1 and 2
Wash system (manifold and wash arms)	Page 3 and 4
Water supply, boiler	Page 5 and 6
Rinse system	Page 7 and 8
Hood and hood guide Rack support Panel	Page 9 and 10
Electrical parts	Page 11 and 12

Parts that have the note "Part made to order only!" are not in stock. This parts are made specially for your order and have a delivery time. They are not returnable.

Racks and accessories see separate list.

GS 90

Untergestell, Behälter
Base frame, container
Châssis, récipient

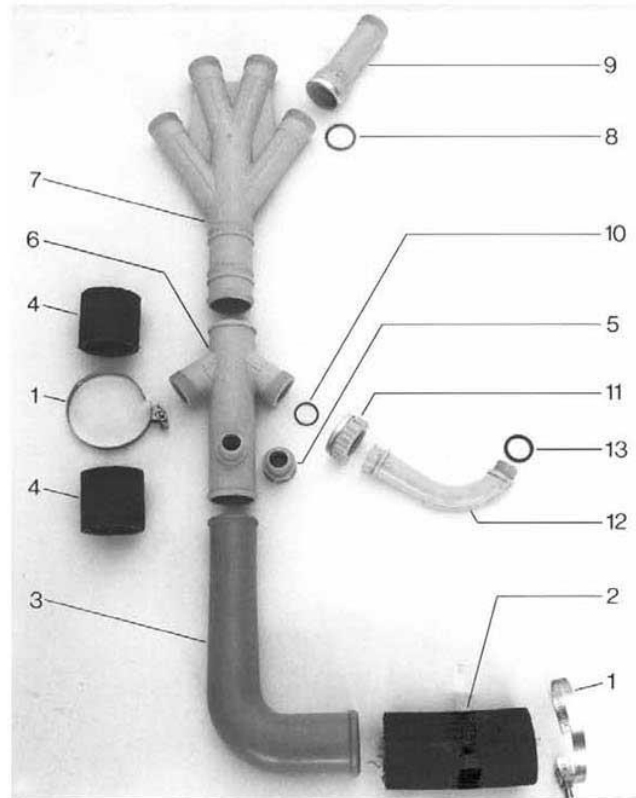


GS 90 - Base frame, container

Pos.	Designation	Part no.	Notes
n.p.	Foot	35 01 064	
n.p.	Threaded insert	35 01 063	
n.p.	Bracket	35 01 068	
n.p.	Sealing tape	48 03 015	
n.p.	Pump 2,7 kW 220/380 V new	55 14 011	
1	Hose clip 182-202	28 02 121	acc. to pump type
n.p.	Hose clip 152-172	28 02 123	
2	Nipple with thread 2" BSP	30 13 302	
3	Suction elbow	40 03 028	
4	Hose clip 62-82	28 02 120	
5	Suction basket	55 13 112	since 2/89
n.p.	Suction basket	61002500	
6	Pump filter	55 13 009	
7	Standpipe 215	61006331	
8	Standpipe bottom part	29 04 224	
9	Siphon	40 03 022	
10	Hose clip 32-52	28 02 110	
11	Mediamat drain	35 01 080	
12	Fabric hose 19 x 4	40 01 016	per meter
13	Hose clip 20-30	28 02 109	
14	Accelerator	35 01 035	
n.p.	Throttle	35 01 123	
15	End piece locking	28 04 041	
16	O-ring 51 x 3,0	27 07 043	since 10/87
17	Head piece	35 01 124	
18	Fabric hose 16 x 4	40 01 015	per metre
19	Mediamat connection	29 06 524	at pump + boiler
20	Counter nut	29 07 203	Only change together
o.P.	Mediamat Connection nipple G 1/2 " X G 3/4" X32	30 11 502	
o.P.	O-Ring 20 X 3,5	27 07 040	
21	Seal 28 x 21	27 09 011	
22	Bihexagonal nut	61 004893	from 12/78 new type
23	O-Ring	27 07 066	new type
o.P.	Supporting ring	62 002875	new type
o.P.	Seal 33 X 26	27 01 003	from 12/78 old type
24	Air chamber	55 04 024	from 12/78 incl. pos. 22;23
25	Wire Hose clip D 8,6 X 1	28 02 348	
26	Detergent hose NW 5 x 3	40 01 024	per metre
n.p.	Air chamber		until 12/78 no more available
n.p.	Leading-in grommet	31 10 103	until 12/78
n.p.	Wire Hose clip	28 02 348	until 12/78
n.p.	Fabric hose 5 x 3	40 01 024	until 12/78, per meter
27	Heating element 220/380 V 6 kW	31 03 025	angled
n.p.	Heating element 240/420 V 6 kW	31 03 042	angled
n.p.	Heating element 254/440 V 6 kW	31 03 041	angled
28	O-ring	27 07 069	for heating element
29	Earth flat plug	31 12 034	
30	Link wire	31 23 088	
31	Tank heating flange	31 03 067	
32	Covering cap	31 03 014	

GS 90

Waschsystem (Verteiler und Wascharme) – Wash system (distributor and wash arms) – Système de lavage (distributeur et rampes de lavage)

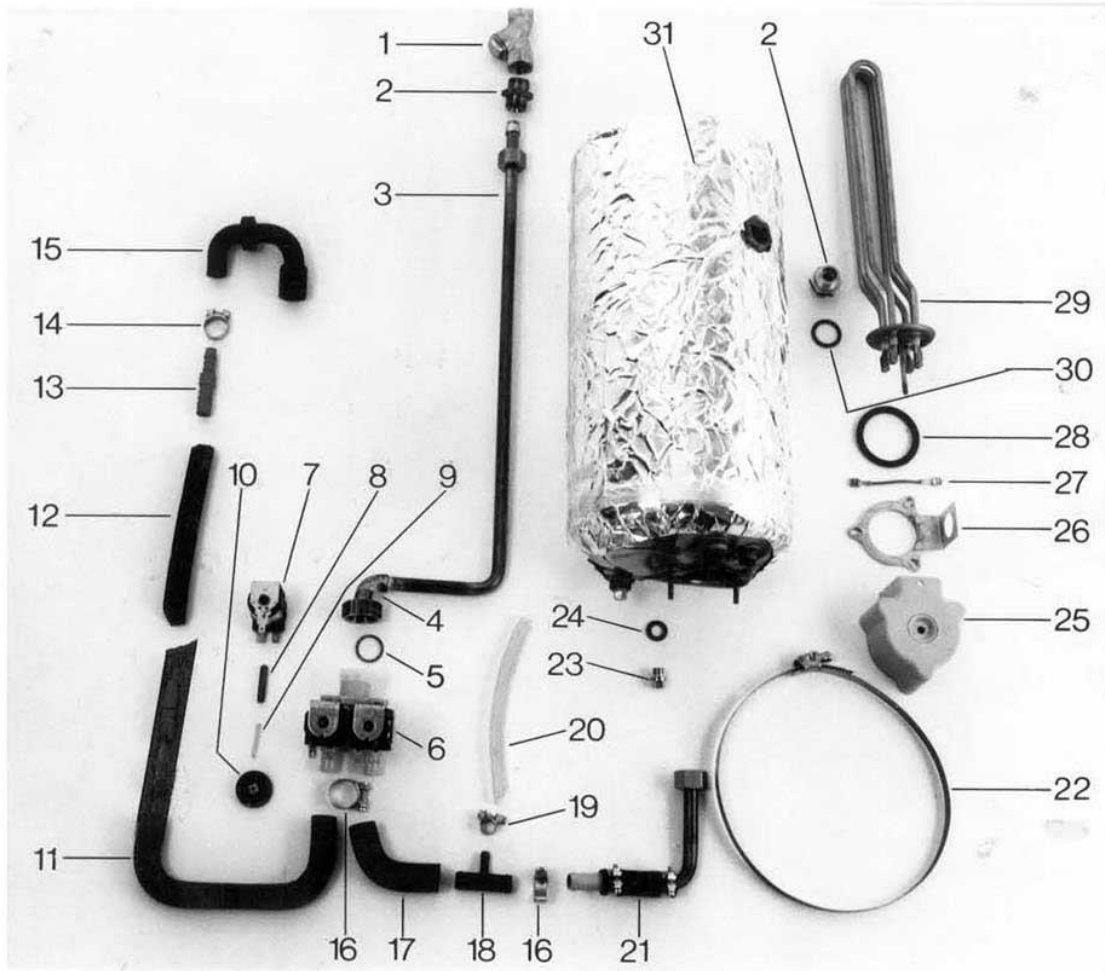


GS 90 - Wash system (manifold and wash arms)

Pos.	Designation	Part no.	Notes
1	Hose clip 62-68	28 02 120	
2	Pump hose ø 60 x 140	40 02 007	per metre
3	Reduction elbow	55 06 051	since 4/88
4	Pump hose ø 50 x 200	40 02 006	per metre
5	Extension 3/4" BSP 38,5 long	35 01 019	from CNS 55 06 039
n.p.	Extension 3/4" BSP 38,5 long, made of CNS	55 06 039	
6	Manifold bottom part	35 01 018	
7	Manifold top part	35 01 017	
8	Seal 32 x 39	27 02 001	
9	Extension	35 01 003	
10	O-ring 24 x 3	27 07 066	
11	Coupling nut	35 01 004	
12	Angle 3/4" BSP	35 01 005	
13	Seal 33 x 26 x 2,5	27 01 003	
14	Wash arm bottom	61000945	
n.p.	Wash arm cpl. rear	55 07 004	upright
n.p.	Wash arm cpl. top	55 07 005	
15	Ring nut 70 long	35 01 130	bottom incl. Pos.17
16	Ring Nut 100 long	35 01 132	Incl. pos. 17
o.P.	Ring nut	35 01 131	130 long
17	Ring nut 32 long	35 01 006	since 3/87
18	O-ring 27 x 4	27 07 016	
19	Wash arm locking	28 04 040	
20	Wash jet base gray	29 10 523	
21	Wash jet base black	29 10 529	
22	Wash jet cap black	29 10 526	
23	Wash jet grey/black	29 10 522	
24	Wash jet black/black	29 10 527	
25	End piece locking	28 04 041	
26	End piece 72°	35 01 010	bottom
27	Angle no. 92 1/2" BSP	30 02 108	f. rear wash arm
28	Wash arm	55 07 004	
29	End piece	35 01 089	rear
30	Wash arm	55 07 005	
31	End piece	35 01 088	top

GS 90

Wassorzulauf und Boiker Water feed and boiler Alimentation d'eau et surchauffeur

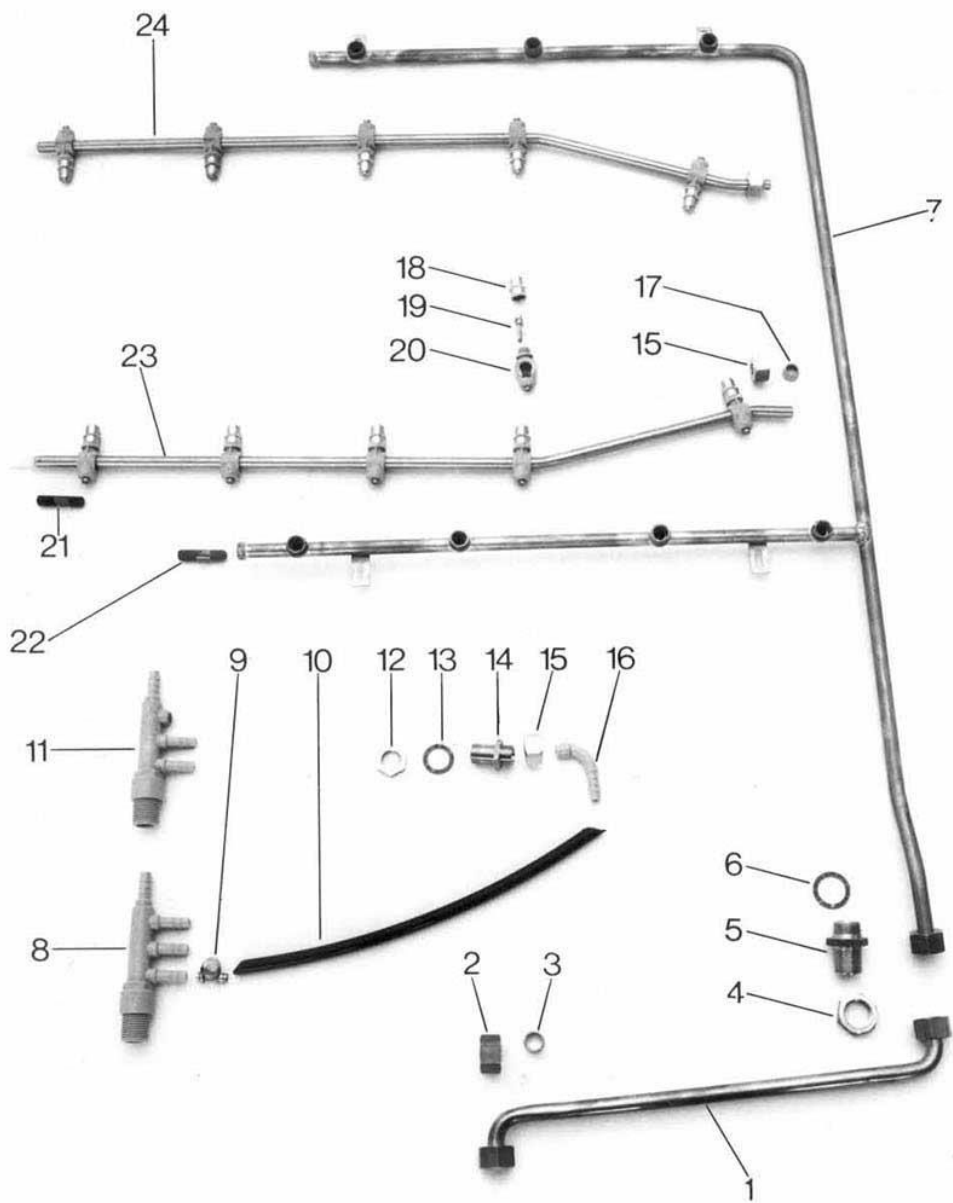


GS 90 - Water supply, boiler

Pos.	Designation	Part no.	Notes
1	Non return valve 1/2" BSP	29 03 230	
2	Double nipple 1/2" BSP	70000459	
3	Instalation set water inlet	55 28 231	
4	Terminal elbow	55 28 231	
5	Seal 19,5 x 24	27 09 010	
6	Double solenoid valve	31 06 182	
n.p.	Plastic bottom part		No more available, replaced by 3106182
7	Magnetic coil 220-240V 50-60Hz		
8	Plunger		
9	Spring		
10	Diaphragm		
11	Tank inlet hose	40 03 050	since 10/78
12	Hose 13 x 3,5	40 02 029	per metre
13	Reducing connection piece	29 06 510	
14	Hose clip	28 02 301	
15	Water inlet	55 31 007	
16	Hose clip ø 20	28 02 108	
17	Hose elbow ø 14	40 03 001	
18	T-piece	35 01 086	
19	Hose clip ø 11	28 02 348	
20	Hose 5 x 3	40 01 024	per meter
n.p.	ELT 20 dispenser	55 28 278	
n.p.	Fixing kit for ELT 10	55 25 029	
n.p.	Detergent dispenser 3 ltr.	35 02 004	
n.p.	Cap blue	35 02 023	
n.p.	Spring to pos. 20	62 002419	
o.P.	Suction pipe	61 000693	
21	Boiler inlet elbow	55 09 041	since 1/87
22	Hose clip 182-202	28 02 126	
23	Hexagon nut	20 01 352	
24	Seal 18 x 10	27 03 003	
25	Covering cap	31 03 014	
26	Clamping plate with angle	55 19 018	
27	Link wire	31 23 088	
28	O-ring	27 07 069	
29	Heating element 6 kW 220/380 V	31 03 017	as from 1/74
n.p.	Heating element 6 kW 254/440 V	31 03 034	
n.p.	Heating element 6 kW 240/420 V	31 03 043	
n.p.	Heating element 6 kW 200/346 V	31 03 046	
30	Seal 28 x 21	27 09 011	
n.p.	Boiler 12 kW + 6kW	55 12 023	as from 3/83
n.p.	Boiler 12 kW + 6 kW	55 12 032	until 3/83
n.p.	Inlet hose 1520 lg.	40 03 051	

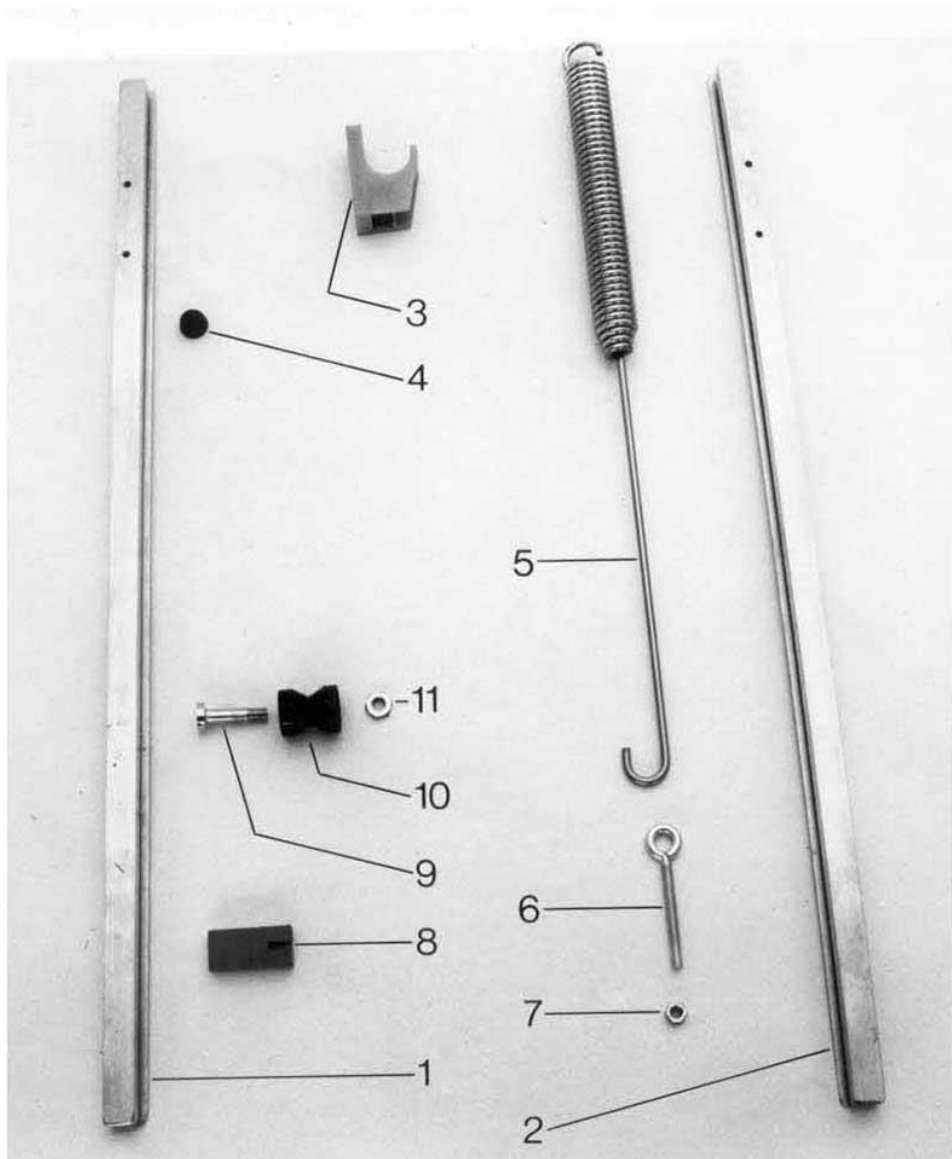
GS 90

Nachspülsystem Rinse system Système de rinçage



GS 90

Haube und Haubenführung
Hood and hood guide
Capot et guide du capot



GS 90 - Hood and hood guide

Pos.	Designation	Part no.	Notes
n.p.	Door lever		no more available
n.p.	Hood cpl.		no more available
1	Hood rail left	55 20 016	possible conversion
2	Hood rail right	55 20 015	accord. to MA 3 brass on plastic
3	Door lever bearing	35 01 082	
4	Rubber buffer	40 06 007	
5	Tension spring	28 04 003	
6	Eye screw M 8	20 06 001	
7	Hexagon nut M 8	21 01 305	
8	Sliding piece	35 01 096	2 X
9	Cylinder screw M 10 x 46	20 19 202	
10	Door lever pulley	35 01 081	4 X
11	Hexagon nut M 10	21 02 306	
n.p.	Reinf. profile f.door lev.pull.	55 20 020	
n.p.	Guide profile plastic	35 01 127	from 1982 8X
n.p.	S-hook	28 15 023	

Rack support

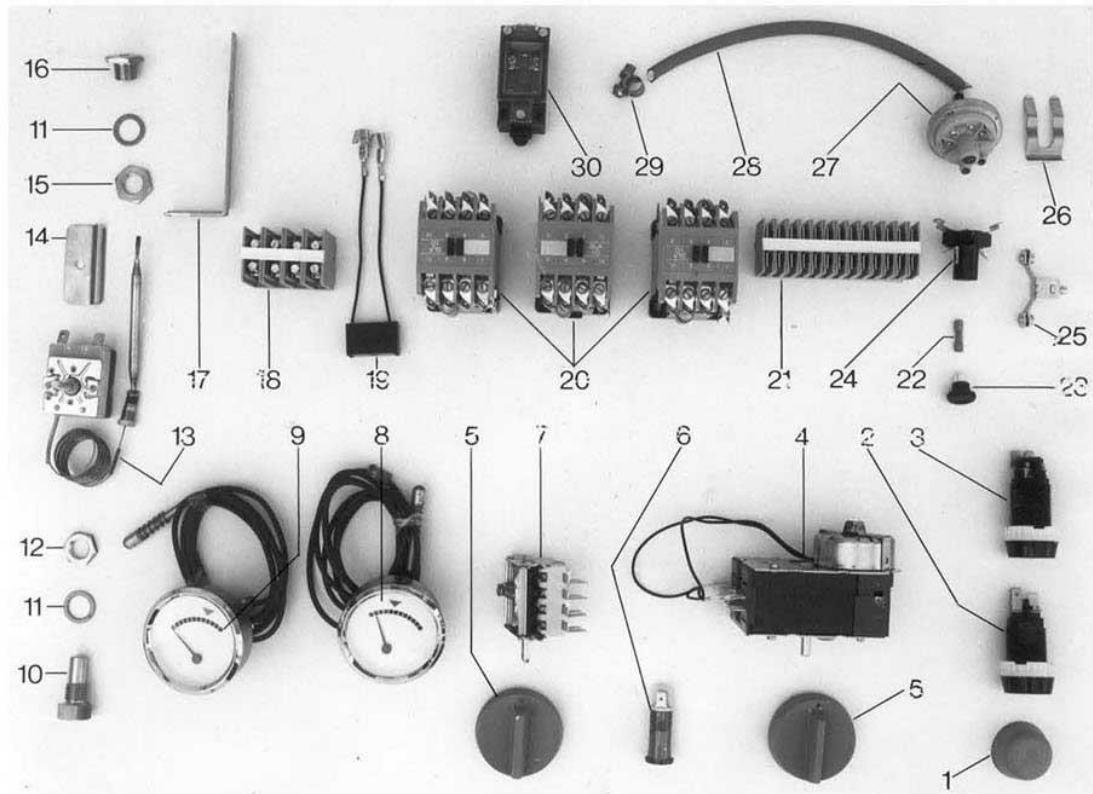
n.p.	Rack support	55 16 063	special design
n.p.	Rack support corner l-r	55 16 064	special design
n.p.	Rack support corner r-l	55 16 065	special design

Panel

n.p.	Lateral panel	55 03 056	special design
n.p.	Front panel	55 03 057	special design
n.p.	Front panel	55 03 058	for corner exec.

GS 90

Elektrobestückung
Electrical parts
Matériel électrique



GS 90 - Electrical parts

Pos.	Designation	Part no.	Notes
n.p.	Control box cover	55 18 024	
1	Sealing cap transparent	31 24 208	
2	Pressure key button white	31 24 001	
3	Pressure switch black	31 24 002	
4	Programme switch	31 05 100	
n.p.	Programme switch 60 Hz	31 05 121	
5	Button with spring	55 19 036	blue
6	Pilot light green	31 08 002	with clip 31 08 029
7	Control switch	31 24 008	
8	Remote thermometer green 50°	32 01 016	
9	Remote thermometer red 80°	32 01 017	
10	Gland for remote thermometer	32 01 030	
11	Seal 14,2 x 19,9	27 09 036	
12	Locking nut M 14 x 1,5	31 25 002	
13	Thermostat	31 25 015	
14	Thermostat clip 2 sections	55 19 011	
15	Locking nut M 14	31 25 002	
16	Gland for thermostat	31 25 001	
17	Thermostat protection	55 19 025	special design
18	Terminal strip 4 sections	55 19 071	
19	RC link 0,25 µF	61002141	
20	Contactora SLA	31 04 161	
21	Terminal strip 13 sections	55 19 070	
22	Fuse insert 6,3 Amp.	31 11 043	
n.p.	Fuse insert 10 Amp.	31 11 093	
23	Screwing cap	31 11 048	
24	Fuse base	31 11 057	
25	Earth terminal	31 09 059	
26	Clamping spring	31 26 001	
27	Level switch green	31 26 023	since 7/85
28	Detergent hose	40 01 024	per meter
29	Hose clip ø 9	28 02 348	
30	Limit switch	31 24 216	
n.p.	Overcurrent relay electronic; 5.7 - 18.9A	31 04 062	
n.p.	Control box corner right	35 01 128	
n.p.	Control box corner left	35 01 129	
n.p.	Control box plate		no more available
n.p.	Control box plate	28 03 230	no more available